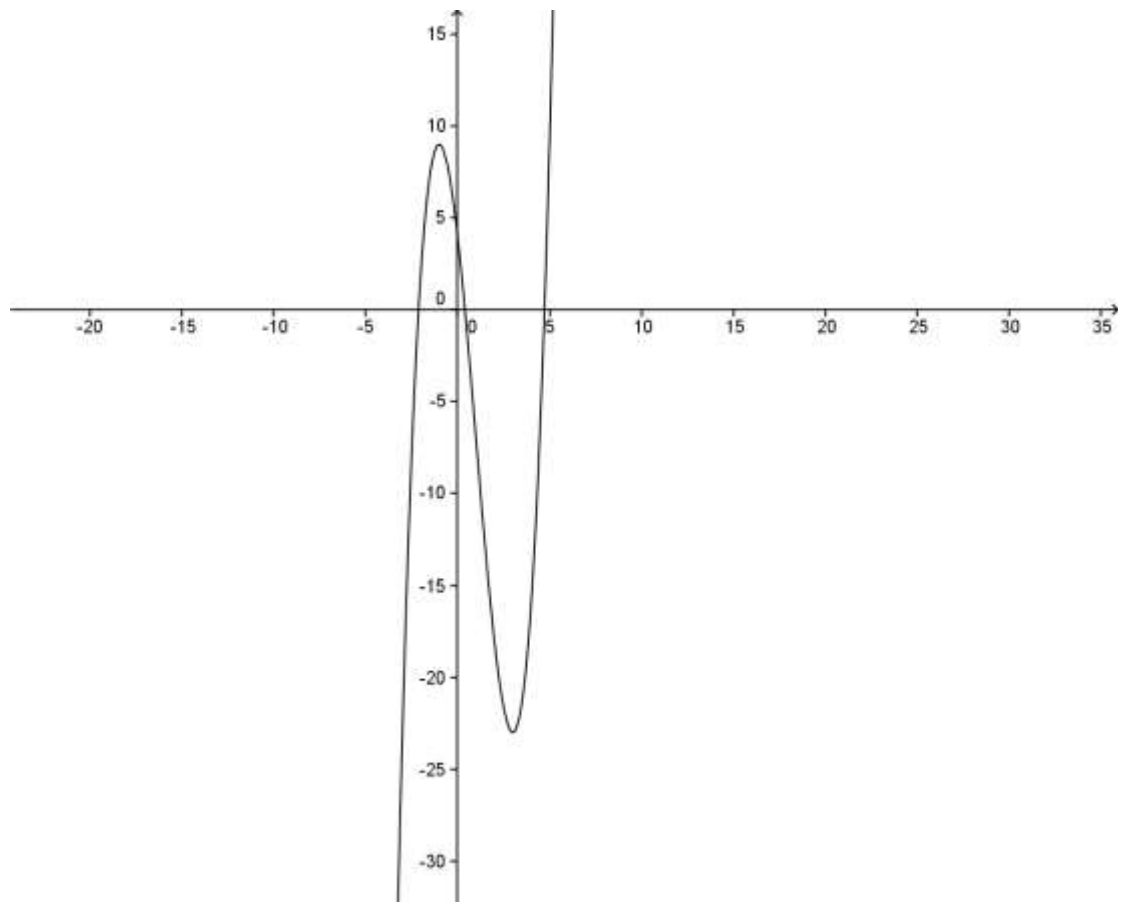


4.



X		-1	1	3	
f(x)		9	-7	-23	
f(x)'	+	0	-	0	+
f(x)''		-	0	+	

上表由一階和二階導函數畫出圖形  $y = x^3 - 3x^2 - 9x + 4$

整理後

$$\begin{cases} y = a \\ y = x^3 - 3x^2 - 9x + 4 \end{cases}$$

由圖表可知  $-23 < a < 9$  時交於相異三點